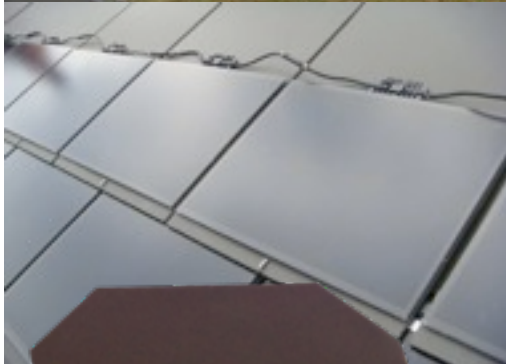




SwissTile



The new solar tile **SwissTile**®

is based on SUNPOWER back-contact high-efficiency solar cells, in order to maximise the power output.

With a smooth appearance, it fits perfectly to aesthetic constraints.

The installation process is very similar to traditional slates.

Connections are visible during installation and easily accessible.



Each tile has an individual by-pass protection by diode.

Soon, the range will offer a wide variety of glass colors and slates.

It incorporates an intelligent junction box that will ensure a proper functioning of every single tile and identifies potential failing tile.

MODELS

Type of solar cell	6 back-contact SUNPOWER
Cell color	black
Junction Box	Potted, with by-pass diode, IP-67 when mated, smart remote control
Glass	High transmission tempered glass (3.2mm)

ELECTRICAL PERFORMANCE

Number and size of cells	6x125x125 mm
Nominal power	18.5 W (-0;+3%)
Max. power point voltage (V_{mpp})	3.25 V
Max. power point current (I_{mpp})	5.74 A
Open circuit voltage (V_{oc})	4.1 V
Short circuit current (I_{sc})	6.1 A
Standard Test Conditions STC	1000 W/m ² , AM 1.5, Cell-T 25°C

TEMPERATURE COEFFICIENTS

Power (P)	-0.38 (%/°C)
Voltage (V_{oc})	-0.011 (V/°C)
Current (I_{sc})	3.5 (mA/°C)

MECHANICAL DATA

Size Tile / PV panel	400X720 mm / 395x305 mm
Visible PV area on the roof	395x280 mm
Weight (net) approx.	4.3 kg

PRODUCT CHARACTERISTICS

Module Encapsulation	Glass/Tedlar with Aluminium foil
Bypass Diode (I_F)	12 A
Max system voltage	600 V
Operating temperature	-40 to 85°
Storage temperature	-10 to 40°
Snowfall pressure	below 2000 Pa
Wind pressure	below 3000 Pa
Output cable/connectors	Amphenol miniature connector for SES / 350 mm lenght cables

CERTIFICATIONS

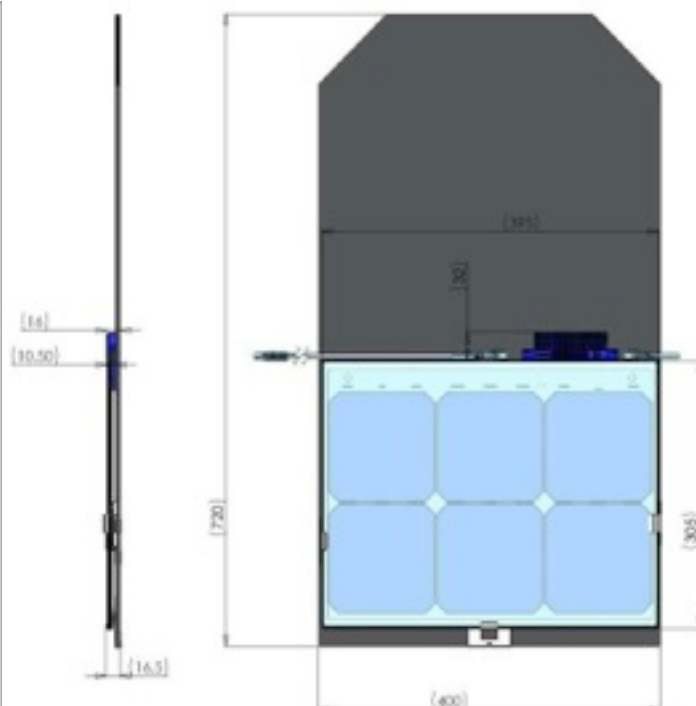
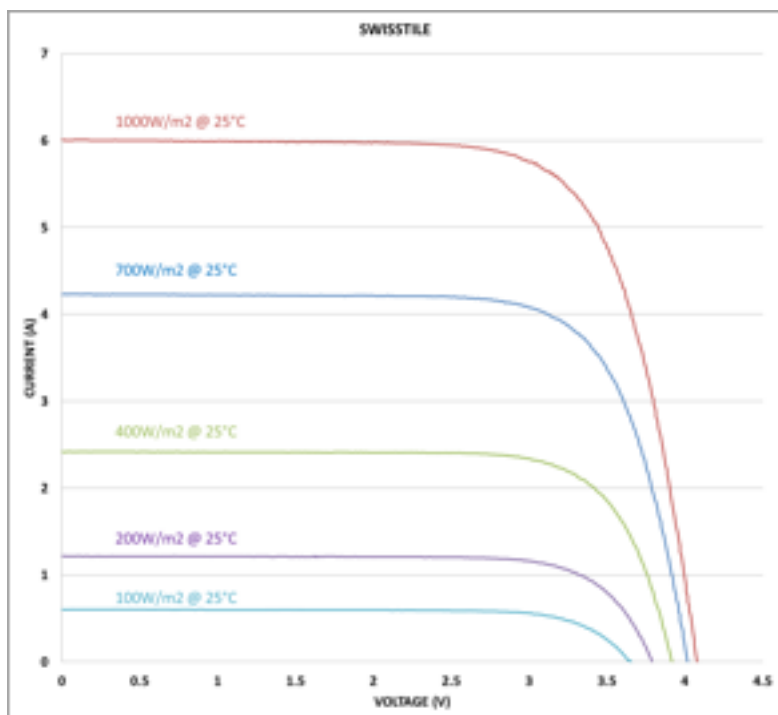
IEC 61215	pending
IEC 61730	pending

WARRANTIES

Power (90% of min. power)	10 years
Power (80% of min. power)	25 years

NUMBER / POWER / M²

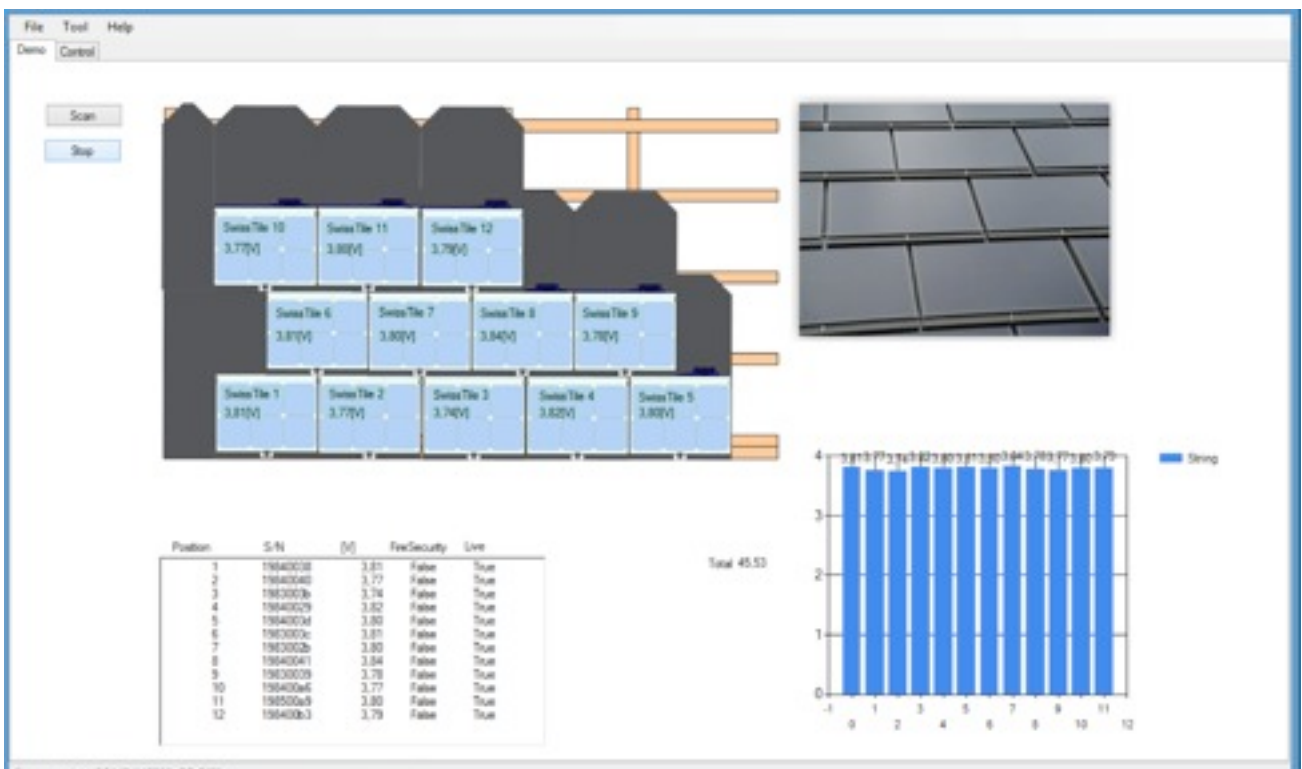
Solar Tile / m ²	8.3 pcs
Power / m ²	153.50 Wp





Each tile has a unique identification code and is recorded in a database with its ID, string number and position in the string. The tiles are identified individually with a gun at installation.

Solar Grid Monitoring



With our Solar Grid Monitoring software, you have a live connection with your installation on your PC or portable device. You can watch the tiles status on the screen as shown above.



Our smart junction box will monitor every single tile and identifies potential failing tiles.

Solar Grid Monitoring



In case of malfunction, the failing tile is instantaneously identified and display in red on the screen. You can see immediately which tiles is not functioning.